

2022

EDUCATIONAL CREDIT FOR EXCEPTIONAL NEEDS CHILDREN (ECENC) PROGRAM REPORT: FY 20-21

PREPARED BY
DR. JENNY MAY

PRESENTATION TO
ACADEMIC STANDARDS &
ASSESSMENTS SUBCOMMITTEE
MAY 16, 2022

MAY 2022

KEY FACTS OF EDUCATIONAL CREDIT FOR EXCEPTIONAL NEEDS CHILDREN (ECENC) PROGRAM

\$3,218,117 Total ECENC Grant Funds

998 ECENC Student Grants

125 Approved ECENC Schools

112 Approved ECENC Schools Receiving ECENC Grants

KEY FACT 1. ECENC APPROVED SCHOOLS ARE LOCATED IN EACH OF THE FIVE CENTER FOR EDUCATOR RECRUITMENT, RETENTION AND ADVANCEMENT (CERRA) REGIONS OF SOUTH CAROLINA.

- The Upstate, Region 1, has **33** approved schools and 451 ECENC student recipients with **\$1,565,570** in grants received, for an average grant amount of **\$3,471**.
- The Savannah River Basin, Region 2, has **7** approved schools and **33** student recipients with **\$48,900** in grants received, for an average grant amount of **\$1,482**.
- The Midlands, Region 3, has **25** approved schools and **227** student recipients with **\$761,630** in grants received, for an average grant amount of **\$3,355**.
- The Pee Dee, Region 4, has **13** approved schools and **32** student recipients with **\$199,708** in grants received, for an average grant amount of **\$6,241**.
- The Lowcountry, Region 5, has **47** approved schools and **255** student recipients with **\$642,309** in grants received, for an average grant amount of **\$2,519**.

KEY FACTS

KEY FACT 2. EACH ECENC APPROVED SCHOOL REPRESENTS ONE OR MORE OF THE INDEPENDENT ACCREDITING ASSOCIATIONS.

- South Carolina Independent School Association (SCISA):
 - **79** ECENC schools
- Southern Association of Colleges and Schools (SACS):
 - **28** ECENC schools
- South Carolina Association of Christian Schools (SCACS):
 - **23** ECENC schools
- Palmetto Association of Independent School Accreditation (PAIS):
 - **16** ECENC schools

KEY FACT 3. NEARLY HALF (49%) OF ECENC SCHOLARSHIP RECIPIENTS ARE FROM HOUSEHOLDS EARNING \$100,000 OR MORE ANNUALLY. SEE SCDOR REPORT IN APPENDIX E

- Nearly half (49%) of ECENC Scholarship Recipients are from households earning \$100,000 or more annually;
- Nearly a third (32%) of ECENC recipients are from households earning between \$50,000 - \$100,000 annually; and
- Less than a fifth (18%) of ECENC recipients are from households earning \$50,000 or less annually.

KEY FACT 4. ANALYSIS OF THE IMPACT OF ECENC PROGRAM ON STUDENT ACHIEVEMENT AND STUDENT ACADEMIC GROWTH IS LIMITED DUE TO LACK OF STUDENT LEVEL DATA.

- ECENC schools are no longer required to provide individual student test scores for students who received an ECENC grant to determine whether students participating in the program have experienced measurable improvement.

RECOMMENDATIONS

CONVENE THE EOC ADVISORY COMMITTEE FOR ECENC PROGRAM REVIEW AND RECOMMENDATIONS.

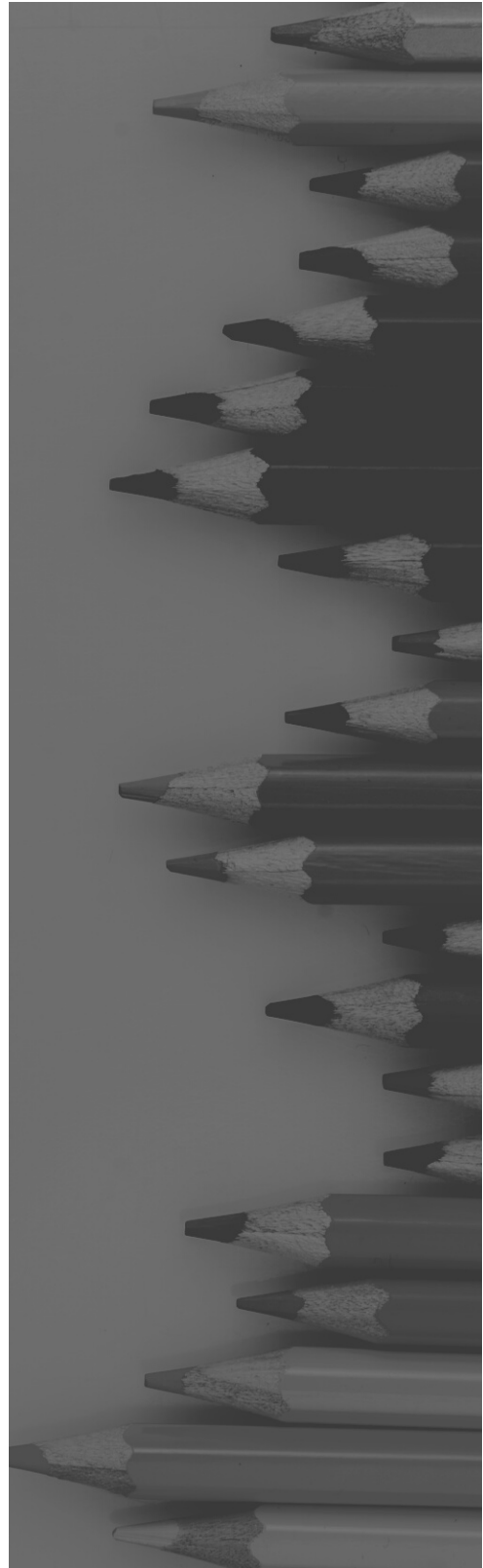
Act 247, Section F(2)(b) provides that the EOC shall establish an advisory committee for the ECENC program. This advisory committee has not convened recently, and the recommendation is for the advisory committee to meet and consider overall program improvement.

SOUTH CAROLINA STATE SUMMATIVE ASSESSMENTS SHOULD BE MADE AVAILABLE FOR ADMINISTRATION TO SOUTH CAROLINA STUDENTS IN PRIVATE SCHOOLS.

South Carolina students in private schools are not currently allowed the opportunity to participate in South Carolina state assessments (i.e., SCREADY and EOCEP).

CREATE INFORMATIONAL MATERIAL TO CLARIFY THE ROLES OF VARIOUS ORGANIZATIONS RESPONSIBLE FOR ECENC PROGRAM ADMINISTRATION.

ECENC approved schools interviewed for this report have requested materials to clarify which organizations (i.e., EOC, Exceptional SC, and DOR) are responsible for the various functions (i.e., school approval, student approval, grant funding) of the ECENC program administration.



THE ECENC REPORT

The following is a report from the South Carolina Education Oversight Committee pursuant to Act 247 of 2018.

Act 247, Section (E)(6)

Annually, the Education Oversight Committee shall issue a report to the General Assembly documenting the impact of the Educational Credit for Exceptional Needs Children Program on student achievement. In addition, the report must include information on individual schools if at least fifty-one percent of the total enrolled students in the private school participated in the Educational Credit for Exceptional Needs Children Program in the prior school year. The report must be according to each participating private school, and for participating students, in which there are at least thirty participating students who have scores for tests administered. If the Education Oversight Committee determines that the thirty participating-student cell size may be reduced without disclosing personally identifiable information of a participating student, the Education Oversight Committee may reduce the participating-student cell size, but the cell size may not be reduced to less than ten participating students.

This report seeks to provide the following about the Educational Credit for Exceptional Needs Children (ECENC):

1. Information on the approval process, participation, and compliance for ECENC schools;
2. Information about the process for collecting assessment results used to document the impact of the ECENC program on student achievement; and
3. Qualitative information from ECENC administrators from a sample of ECENC schools.

This report is the fourth annual report on the impact of the ECENC program as required by Act 247 of 2018. This law defines qualifying students and eligible schools for participation in the ECENC program.

A qualifying student means a student who is an exceptional needs child, a South Carolina resident, and who is eligible to be enrolled in a South Carolina secondary or elementary public school at the kindergarten or later year level for the applicable school year.

Grants may be awarded in an amount not exceeding eleven thousand dollars or the total annual cost of tuition, whichever is less, to a qualifying student at an eligible school. A qualifying student receiving a grant may not be charged tuition by an eligible school in an amount greater than the student would be charged if the student was not a qualifying student.

An eligible school, as approved by the Education Oversight Committee, is an independent school including those religious in nature, other than a public school, at which the compulsory attendance requirements may be met that:

- offers a general education to primary or secondary school students;
- does not discriminate on the basis of race, color, or national origin;
- is located in this State;
- has an educational curriculum that includes courses set forth in the state's diploma requirements, graduation certificate requirements for special needs children, and where the students attending are administered national achievement or state standardized tests, or both, at progressive grade levels to determine student progress;
- has school facilities that are subject to applicable federal, state, and local laws;
- is a member in good standing of the Southern Association of Colleges and Schools, the South Carolina Association of Christian Schools, the South Carolina Independent Schools Association, or Palmetto Association of Independent Schools; and
- provides a specially designed program or learning resource center to provide needed accommodations based on the needs of exceptional needs students or provides onsite educational services or supports to meet the needs of exceptional needs students, or is a school specifically existing to meet the needs of only exceptional needs students with documented disabilities.

ECENC SCHOOL APPROVAL TIMELINE

The following was the process and timeline used by the Education Oversight Committee to determine school eligibility in the ECENC Program for School Year 2020-21. Each school, new or recurring, was required to comply with the same Program Standards and Reporting Requirements.

January 2, 2021

1. Notification by email to schools currently in good standing with the ECENC Program in the 2019-20 school year that the application process is open. The Application to Participate in the ECENC Program for 2020-21 is available on the EOC's website that will connect to the ECENC Manual for SY2020-21 that is to be used as a guide to the Application Process and all Documents that must be completed, signed, attached and returned to the EOC.
2. Publication on the EOC's website of the completed applications of schools meeting the standards and reporting requirements for SY2019-20.

February 28, 2021

1. The Application to Participate and Document A - Statement of Services must be submitted to the EOC by February 28, 2021 to be approved for participation in the program for SY2020-21.
2. The EOC will publish a list on our website of schools meeting the standards and reporting requirements for participation in the ECENC program for SY2020-21.

June 30, 2021

1. Document B - Grants Received must be completed, signed and returned to the EOC by June 30, 2021 containing information on the number of students (K-12) that were enrolled in the entire school in 2020-21 and information on grants received in 2020-21. No personally identifiable information of students should be submitted.

September 1, 2021

1. Document C - School-Level Assessment Results must be provided directly to the EOC with the NAME of each national achievement test administered and the scale scores/percentile rankings/stanines/grade equivalents for ELA (Reading) and Mathematics. This information must be reported by grade level for classes with 10 or more students of all grades tested and attached by September 1, 2021. No personally identifiable information of teachers or students should be submitted.
2. ***Document C - Individual Student Assessment Results must be provided to the SC Revenue and Fiscal Affairs Office (RFA) by September 1, 2021. Students who received grants in SY2020-21 must have their individual assessment results, received from the testing vendor, uploaded to the secure portal AFTER RFA has entered a fully executable MOU with the school. The school should contact RFA to see if a 5-year MOU was signed before submitting Individual Assessment Results.***
3. Document C - Information on Staff Responsible for the submission of School-Level Assessment Results and Individual Student Assessment Results must be provided to the EOC by September 1, 2020. Document C must be completed, signed and returned at that time.

November 15, 2021

1. A "copy of a compilation, review, or compliance audit of the organization's financial statements as relating to the grants received, conducted by a certified public accounting firm" must be received by the EOC no later than November 15, 2021. No personally identifiable information of students should be submitted.

The requirement to submit Individual Student Assessment results was eliminated from the requirements of Act 247. Therefore, schools were not required to complete this portion of the school eligibility process.

ECENC SCHOOL ELIGIBILITY

KEY FINDING

There were **125 eligible ECENC schools** serving **998 eligible ECENC students**.

KEY FINDING

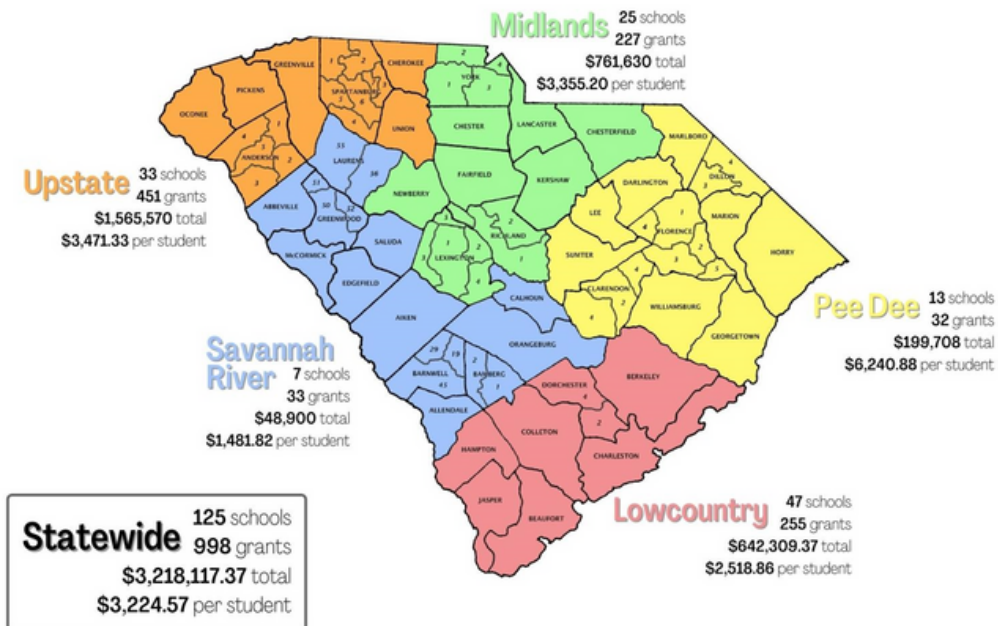
ECENC approved schools are located in each of the five Center for Educator Recruitment, Retention, and Advancement (CERRA) regions of South Carolina.

There were 125 eligible schools approved for participation in the ECENC program in 2020-21. 139 schools were approved for ECENC participation in 2019-20, reflecting a decline of 14 approved schools between the years.

Of the 125 schools approved to receive ECENC dollars, 112 schools received ECENC grant funding between \$700 and \$544,335.

There were 13 schools that did not have any students who received grants. In the 2020-21 school year, all schools who applied to be an approved school met the criteria for approval.

ECENC Grants by CERRA Region



ECENC SCHOOL ELIGIBILITY

KEY FINDING

Each ECENC Approved Schools represents one or more of the independent accrediting associations for private schools.

All of the approved ECENC schools were verified as being current members in good standing in at least one of the private school accrediting organizations. Some of the ECENC schools are in good standing with more than one of the accrediting organizations.

- South Carolina Independent School Association (SCISA):
 - 79 ECENC schools
- Southern Association of Colleges and Schools (SACS):
 - 28 ECENC schools
- South Carolina Association of Christian Schools (SCACS):
 - 23 ECENC schools
- Palmetto Association of Independent School Accreditation (PAIS):
 - 16 ECENC schools

ECENC STUDENT PARTICIPATION DATA

Exceptional SC provided data on students rising Kindergarten through grade 12 who applied for and those who received grants in the 2020-21 school year. For the 2020-21 school year, 2,257 students applied for funding and 1,054, or approximately 47%, received grants. There was a great difference by grade level between applicants and funded students with a range of 3% to 87% between Kindergarten and twelfth grade. This difference may be explained by the fact that students who have previously received ECENC grants receive priority in the awarding of grants in subsequent years. For the number of applications, approvals, and percentages by grade level, see the appendix.

The South Carolina Department of Revenue issued a report on January 15, 2022 in which they report Exceptional SC awarded 1,054 scholarship recipients for the 2020-21 school year, most of which went to students who previously received an ECENC scholarship.

See Appendix for full report by South Carolina Department of Revenue.

KEY FINDING

Students in all grades, K through 12th, received funding through the ECENC program, with the highest percentage of approved students from each grade level being in 12th grade.

KEY FINDING

Of the 2,257 of students who applied, 47% or 1,054 received some level of funding, the average amount across schools and age groups being \$3,225.

ECENC STUDENT PARTICIPATION DATA

Count of Children by Grade (K-12) who Applied for and Received Grants from Exceptional SC

Grade Level	Applied	Funded	Percent of Students Funded
Kindergarten - 5 yr old	66	2	3.03%
First	102	9	8.82%
Second	127	18	14.17%
Third	171	77	45.03%
Fourth	360	87	24.17%
Fifth	206	91	44.17%
Sixth	205	111	54.15%
Seventh	227	122	53.74%
Eighth	202	120	59.41%
Ninth	176	108	61.36%
Tenth	165	115	69.70%
Eleventh	136	99	72.79%
Twelfth	114	95	83.33%
Total	2,257	1,054	46.70%

ECENC STUDENT ACHIEVEMENT DATA

Historically, ECENC funded students' scores were submitted as a measurement of academic growth, and now the school level assessment data from the previous academic year is submitted as a mechanism of compliance with the ECENC school approval process. This change provides an additional compliance measure and changes how the assessment data can be analyzed to answer the evaluation questions and meet the requirement to evaluate the impact of the ECENC program.

The South Carolina Department of Education (SCDE) has interpreted the Education Accountability Act to prohibit private school students from taking state summative assessments which include, but are not limited to, SC READY in grades 3 through 8, and end of course assessments in Algebra 1, English 2, Biology and US History and the Constitution. Instead, private schools have the flexibility to choose a nationally normed assessment to measure student performance.

Schools that administer national assessments typically select an assessment or assessments that measure reading or English Language Arts (ELA) competencies and mathematics competencies. Examples of assessments that are used in elementary and middle school grades are measures of academic progress (MAP) and the Iowa Test of Basic Skills (ITBS). All schools administered assessments or had valid reasons for not administering assessments (i.e., COVID-19 school closures, supply chain issues accessing assessments in time to administer them etc.).

The most commonly used nationally normed assessments for ECENC approved private schools in the 2020-21 school year include: PSAT, SAT, ACT, MAP and the Stanford 10, which is similar to previous years. See appendix for a compendium of assessments used by approved schools.

KEY FINDING

Analysis of impact of ECENC program on student achievement and student growth is limited by lack of student level data.

RECOMMENDATION

South Carolina state summative assessments should be made available for administration to South Carolina students in private schools.

Act 247 requires an evaluation of the ECENC program’s impact on student achievement where a majority of students enrolled in the school (51% or more of students) received a grant from Exceptional SC. In the 2020-21 school year, three schools had the majority of students accessing ECENC funds:

School	Percentage of Students funded through ECENC	Total Amount per School	Average Amount per grant	Assessment(s) Used
Camperdown Academy	59%	\$544,335.00	\$5,498.33	Gates-MacGinitie (Reading)
				GMADE (Math)
Hope Christian Academy	89%	\$26,400.00	\$3,300.00	Woodcock-Johnson IV
The Chandler School	57%	\$139,200.00	\$4,350.00	OLSAT, Stanford 10, PSAT

Because an amendment to Act 247 eliminated access to scores by individual students funded through ECENC dollars, progress individual students have made cannot be discerned from this data. See appendix for school, subject and grade level average scores for Reading and Math.

For more details about the assessments administered by Camperdown Academy, Hope Christian Academy, and The Chandler School, see Appendix B.

ECENC SCHOOL SITE VISITS

For the first time, a qualitative data collection was included as a part of the ECENC report. To ensure a representative group was included for qualitative data collection, the following selection process was developed. Approved and funded schools in the 2019-20 and 2020-21 school year were ranked by amount of ECENC grants received, and the top 10 schools were invited to participate. Approved ECENC schools were then grouped by CERRA region and accrediting organization to ensure that a complete and accurate representation could be reported. After this process, any regions or accrediting organizations that were not represented in the list of top 10 funded schools were identified and a total of 15 schools were invited to participate and the list was an attempt to accurately represent all approved ECENC schools.

The qualitative data collection included several components:

1. Schools were invited to participate, and those who agreed to a visit from EOC staff set a time at the schools' convenience and were sent evaluation questions (see Appendix for the invitation and questions).
2. During the site visit, staff went on a tour of the school and learned about the school culture, curriculum and special services and accommodations that students could access, and community partnerships that serve children and families.
3. EOC staff asked questions specific to the ECENC program and gathered information to illustrate the impact of the program. In some cases the school pulled a panel of leaders to speak to the questions and in some cases, the head master or principal would speak with staff. The option to submit written responses to questions was also given, but this year there were no schools who elected to do so.

There were six schools of the 15 invited who elected to participate in a site visit. The ECENC schools that elected to participate were not representative of the state, and this is an unavoidable limitation of the data given that the visits were voluntary. The feedback these participants provided offers actionable steps to expand the impact of the ECENC program. However, a more diverse sample of school perspective would also be beneficial in future reports.

Findings from this data collection process fall into the following themes:

- Procedures: Calendar, timeline and ECENC implementation
- Funding of Student Grant Considerations
- Benefits of the ECENC program to students

The most common theme gathered from interviews and site visits was around the calendar of the ECENC program administration. School leaders reported that families who access the ECENC program must make decisions about enrollment for the next school year in February through March. Families are not informed if their child has received a grant or the amount until later in March typically after the obligation period has ended.

Another clear theme was related to funding structures for ECENC. School leaders who participated in the site visits, recommended that funding and grant allotment be determined using a metric for need. The more intensive interventions needed, the most intensive supports offered by the school, or the families with the most financial need ranking highest on a priority for funded grants.

The benefits of the ECENC program were also described in great detail, with school leaders reporting that the ECENC grants allow for increased access to specialized services. By providing increased access to a variety of educational settings for students to access special education services the ECENC program supports the Individuals with Disabilities Education Act (IDEA) requirement of a “continuum of service delivery environments”. Additionally, the program provides increased parent choice around what setting will be most beneficial for their child.

RECOMMENDATION

Convene the EOC advisory committee for ECENC program implementation review and to make recommendations.

RECOMMENDATION

Create information material to clarify the roles of various organizations responsible for ECENC program administration.

EDUCATIONAL CREDIT FOR EXCEPTIONAL NEEDS CHILDREN (ECENC) PROGRAM REPORT: FY 20-21

SOUTH CAROLINA EDUCATION OVERSIGHT COMMITTEE

The SC Education Oversight Committee is an independent, non-partisan group made up of 18 educators, business persons, and elected leaders. Created in 1998, the committee is dedicated to reporting facts, measuring change, and promoting progress within South Carolina's education system.

ADDITIONAL INFORMATION

If you have questions, please contact the Education Oversight Committee (EOC) staff for additional information. The phone number is 803.734.6148. Also, please visit the EOC website at www.eoc.sc.gov for additional resources.

MAY 2022

Appendix A

School, Percent of Students Funded by ECENC, Total Amount, Average per Student Amount and CERRA Region

School	% Funded by ECENC	Total amount	Average per Student Amount	CERRA Region
Addlestone Hebrew Academy	2%	\$3,200.00	\$3,200.00	5
All Saints' Episcopal Day School*	0%	\$0.00	\$0.00	4
Anderson Christian School	5%	\$21,600.00	\$2,400.00	1
Ascent Christian Academy	0%	\$0.00	\$0.00	5
Ashley Hall	1%	\$26,200.00	\$5,240.00	5
Beaufort Academy	0%	\$0.00	\$0.00	5
Ben Lippen School	2%	\$49,200.00	\$2,460.00	3
Bishop England High School	5%	\$102,000.00	\$3,000.00	5
Blessed Sacrament School	2%	\$5,700.00	\$1,425.00	5
Bob Jones Academy	1%	\$22,200.00	\$1,585.71	1
Calhoun Academy	0%	\$1,200.00	\$1,200.00	2
Calvary Christian School-Greer	11%	\$21,500.00	\$2,150.00	1
Calvary Christian School-Myrtle Beach	0%	*	*	5
Camden Military Academy	2%	\$22,100.00	\$4,420.00	3
Camperdown Academy	59%	\$544,335.00	\$5,498.33	1
Cardinal Newman School	8%	\$138,500.00	\$3,077.78	3
Carolina Christian Academy	0%	\$0.00	\$0.00	3
Cathedral Academy	0%	*	*	5
Chabad Jewish Academy	0%	*	*	5
Charis Academy	0%	\$0.00	\$0.00	5
Charleston Collegiate School	1%	\$16,309.37	\$8,154.69	5

Appendix A

School, Percent of Students Funded by ECENC, Total Amount, Average per Student Amount and CERRA Region

School	% Funded by ECENC	Total amount	Average per Student Amount	CERRA Region
Charleston Day School	1%	\$13,100.00	\$4,366.67	5
Cherokee Creek Boys School, Inc.	0%	\$0.00	\$0.00	1
Christ Church Episcopal School	6%	\$242,100.00	\$3,668.18	1
Christ Our King-Stella Maris Catholic School	2%	\$18,200.00	\$1,400.00	5
Clarendon Hall School	1%	\$1,600.00	\$800.00	4
Coastal Christian Preparatory School	8%	\$7,300.00	\$2,433.33	5
Colleton Preparatory Academy	6%	\$44,000.00	\$2,200.00	5
Covenant Classical Christian School	0%	*	*	3
Cross Schools	2%	\$12,400.00	\$2,066.67	5
Crown Leadership Academy	3%	\$8,000.00	\$1,600.00	5
Cutler Jewish Day School	5%	\$6,600.00	\$2,200.00	3
Divine Redeemer Catholic School	1%	\$2,500.00	\$1,250.00	5
Easley Christian School	1%	\$1,400.00	\$1,400.00	1
Einstein Academy	8%	\$7,500.00	\$2,500.00	1
First Baptist School of Charleston	0%	\$0.00	\$0.00	5
First Presbyterian Academy	5%	\$5,635.00	\$296.58	1
Five Oaks Academy	1%	\$3,700.00	\$1,850.00	1
Foothills Christian School	0%	\$0.00	\$0.00	1
Francis Hugh Wardlaw Academy	0%	\$0.00	\$0.00	2
Glenforest School	46%	\$81,000.00	\$3,521.74	3

Appendix A
 School, Percent of Students Funded by ECENC, Total Amount, Average per Student
 Amount and CERRA Region

School	% Funded by ECENC	Total amount	Average per Student Amount	CERRA Region
Grace Christian School	2%	\$3,900.00	\$1,300.00	3
Greenville Classical Academy	0%	\$0.00	\$0.00	1
Hammond School	2%	\$46,430.00	\$3,316.43	3
Hampton Park Christian School	2%	\$10,300.00	\$1,716.67	1
Harvest Community School	1%	\$1,000.00	\$1,000.00	4
Hawthorne Christian Academy	1%	\$700.00	\$700.00	3
Heathwood Hall Episcopal School	2%	\$53,800.00	\$3,842.86	3
Hidden Treasure Christian School	38%	\$98,400.00	\$4,100.00	1
Hilton Head Christian Academy	2%	\$31,300.00	\$3,130.00	5
Hilton Head Preparatory School	1%	\$10,300.00	\$3,433.33	5
Holy Trinity Catholic School	1%	\$1,700.00	\$1,700.00	4
HOPE Academy	44%	\$76,500.00	\$2,067.57	1
Hope Christian Academy	89%	\$26,400.00	\$3,300.00	3
James Island Christian School	1%	\$1,700.00	\$1,700.00	5
John Paul II Catholic School	3%	\$19,600.00	\$2,800.00	5
Laurence Manning Academy	0%	*	*	4
Little Learners Academy	0%	*	*	1
Lowcountry Preparatory School	0%	\$0.00	\$0.00	4

Appendix A

School, Percent of Students Funded by ECENC, Total Amount, Average per Student Amount and CERRA Region

School	% Funded by ECENC	Total amount	Average per Student Amount	CERRA Region
Mason Preparatory School	0%	\$3,400.00	\$3,400.00	5
Mead Hall Episcopal School	1%	\$7,700.00	\$1,925.00	2
Miracle Academy Preparatory School	35%	\$45,600.00	\$2,400.00	5
Mitchell Road Christian Academy	2%	\$18,300.00	\$2,287.50	1
Montessori School of Anderson	2%	\$2,400.00	\$2,400.00	1
Montessori School of Florence	0%	\$0.00	\$0.00	4
Nativity Catholic School	4%	\$5,300.00	\$1,325.00	5
Newberry Academy	0%	*	*	3
North Walterboro Christian Academy	0%	\$0.00	\$0.00	5
Northside Christian Academy	0%	\$0.00	\$0.00	3
Oakbrook Preparatory School	3%	\$20,400.00	\$1,700.00	1
Oconee Christian Academy	1%	\$3,000.00	\$1,500.00	1
Orangeburg Preparatory Schools, Inc.	1%	\$6,500.00	\$1,300.00	2
Our Lady of Peace Catholic School	12%	\$24,700.00	\$1,300.00	2
Our Lady of the Rosary Catholic School	6%	\$16,400.00	\$2,050.00	1

Appendix A

School, Percent of Students Funded by ECENC, Total Amount, Average per Student Amount and CERRA Region

School	% Funded by ECENC	Total amount	Average per Student Amount	CERRA Region
Palmetto Christian Academy of Greenwood (PCAG)	0%	\$0.00	\$0.00	2
Palmetto Christian Academy-Mt. Pleasant	2%	\$21,500.00	\$2,150.00	5
Patrick Henry Academy	4%	\$8,100.00	\$900.00	5
Pee Dee Academy	1%	\$5,000.00	\$1,250.00	4
Porter-Gaud School	0%	\$20,700.00	\$5,175.00	5
Prince of Peace Catholic School	4%	\$8,400.00	\$1,400.00	1
Providence Classical School of Rock Hill	0%	\$0.00	\$0.00	3
Ridge Christian Academy	12%	\$19,200.00	\$1,600.00	5
Riverpointe Christian Academy	0%	\$0.00	\$0.00	5
Sandhills School	49%	\$241,900.00	\$4,838.00	3
South Aiken Baptist Christian School	0%	*	*	2
Southside Christian School	5%	\$180,100.00	\$3,274.55	1
Spartanburg Christian Academy	0%	\$0.00	\$0.00	1
Spartanburg Day School	3%	\$48,000.00	\$4,000.00	1
St. Andrew Catholic School	7%	\$19,200.00	\$1,600.00	5
St. Anne Catholic School-Rock Hill	2%	\$21,300.00	\$2,366.67	3

Appendix A

School, Percent of Students Funded by ECENC, Total Amount, Average per Student Amount and CERRA Region

School	% Funded by ECENC	Total amount	Average per Student Amount	CERRA Region
St. Anne-St. Jude Catholic School-Sumter	0%	*	*	4
St. Anthony Catholic School-Florence	5%	\$8,500.00	\$1,700.00	4
St. Anthony of Padua Catholic School	4%	\$11,000.00	\$2,200.00	1
St. Elizabeth Ann Seton Catholic High School	3%	\$2,200.00	\$2,200.00	5
St. Francis by the Sea Catholic School	1%	\$2,400.00	\$1,200.00	5
St. Gregory the Great Catholic School	1%	\$2,200.00	\$1,100.00	5
St. John Catholic School-Charleston	2%	\$16,800.00	\$2,400.00	5
St. John Neumann Catholic School	12%	\$14,100.00	\$2,350.00	3
St. John's Christian Academy	2%	\$8,700.00	\$1,242.86	5
St. Joseph Catholic School-Anderson	0%	\$0.00	\$0.00	1
St. Joseph Catholic School-Columbia	13%	\$14,800.00	\$1,644.44	3
St. Joseph's Catholic School-Greenville	3%	\$63,200.00	\$3,160.00	1
St. Martin de Porres Catholic School	0%	\$0.00	\$0.00	3
St. Mary Help of Christians Catholic School	2%	\$8,800.00	\$2,200.00	2

Appendix A
 School, Percent of Students Funded by ECENC, Total Amount, Average per Student
 Amount and CERRA Region

School	% Funded by ECENC	Total amount	Average per Student Amount	CERRA Region
St. Michael Catholic School	0%	\$0.00	\$0.00	5
St. Peter's Catholic School-Beaufort	0%	\$0.00	\$0.00	5
St. Peter's Catholic School-Columbia	0%	\$0.00	\$0.00	3
Step of Faith Christian Academy	0%	\$900.00	\$900.00	5
Summerville Catholic School	2%	\$5,100.00	\$1,700.00	5
Sumter Christian School	2%	\$2,200.00	\$1,100.00	4
Tabernacle Christian School	0%	*	*	1
The Chandler School	57%	\$139,200.00	\$4,350.00	1
The Charleston Catholic School	9%	\$34,000.00	\$2,000.00	5
The Complete Student	0%	\$0.00	\$0.00	5
The Cooper School	0%	\$0.00	\$0.00	5
The King's Academy	5%	\$176,708.00	\$11,780.53	4
The Timmerman School	1%	\$7,200.00	\$1,800.00	3
The Village School of Gaffney	0%	\$0.00	\$0.00	1
Thomas Heyward Academy	4%	\$10,800.00	\$1,200.00	5
Thomas Sumter Academy	1%	\$3,000.00	\$1,500.00	4
Trident Academy	29%	\$94,400.00	\$5,900.00	5
Trinity Christian Educational School	0%	\$0.00	\$0.00	1
Victory Bible Christian School	0%	\$0.00	\$0.00	3
Walnut Grove Christian School	0%	*	*	3

Appendix A

School, Percent of Students Funded by ECENC, Total Amount, Average per Student Amount and CERRA Region

School	% Funded by ECENC	Total amount	Average per Student Amount	CERRA Region
Westgate Christian School	0%	\$0.00	\$0.00	1
Westminster Catawba Christian School	4%	\$33,700.00	\$2,592.31	3
Westside Christian Academy	0%	*	*	4
Statewide	3%	\$3,218,117.37	\$3,224.57	1-5

Appendix B

Student Assessment in ECENC Approved Schools with 51% or More Students Funded:

Camperdown Academy Average Student Scores in 2020-21 School Year:

Reading Scores on Gates-MacGinitie

Grade	Number of Students	Average
1	14	34.9
2	20	33.5
3	29	47.0
4	20	38.7
5	23	38.3
6	23	42.8
7	23	50.0
8	21	55.1

Math Scores on GMADE

Grade	Number of Students	Average
1	14	90.0
2	20	92.2
3	29	112.8
4	20	99.4
5	23	92.4
6	23	99.6
7	23	96.3
8	21	97.9

Hope Christian Academy Average Student Scores in 2020-21 School Year:

Scores were not reported due to fewer than 10 students in the school. Suppressing this data protects the identity of students and their personal information in accordance with state and federal law.

The Chandler School Average Student Scores in 2020-21 School Year:

PSAT Scores in 8 th Grade	
Reading	Math
347	362

Appendix C:
Invitation to Participate in Qualitative Evaluation and Interview Questions

Good morning,

Act 247 of 2018 establishes the Educational Credit for Exceptional Needs Children (ECENC) program, and the Education Oversight Committee (EOC) is required to annually issue a report to the General Assembly documenting the impact of this program. Historically, this report has been written using student test scores, which is an important part of measuring student learning, but some measures of quality can be missed using only test scores. This year the EOC would like to include information outside the scope of standardized test scores to be obtained through visits to the schools eligible for ECENC funds. This would allow for a more complete picture of the impact of the ECENC program on students and families, and enable us to learn from the expertise of teachers and administrators who implement the program. To that end, we'd like to schedule a time to visit and tour your school, and talk with teachers about their experience. This will add to the General Assembly's knowledge of the impact of the ECENC program, and the report will be written so that individuals remain anonymous. I will call this week to set a time that is convenient for you so that EOC staff can come tour the school. During this scheduling call, we can also discuss further how you'd like conversations with teachers to be facilitated and I would be happy to answer any questions or address any concerns you may have about this process. Our ideal timeline for completed visits and conversations is anytime before April 1, so please consider when would be best for you this month and we'll schedule a time most convenient for you.

Warmly,

Jenny

Guiding Questions

1. From your perspective, what are the most important benefits of the ECENC program?
2. Are there any problems implementing the ECENC program that could be alleviated at the state level? Please describe them.
 - a. Do you have suggestions to improve?
3. Does your school partner with the community to serve students? If so, how?
4. Do you feel supported in the implementation of the ECENC program in your school?
5. What else should I know, but haven't asked about the ECENC program from your perspective?

